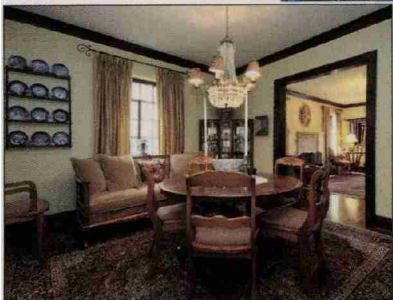
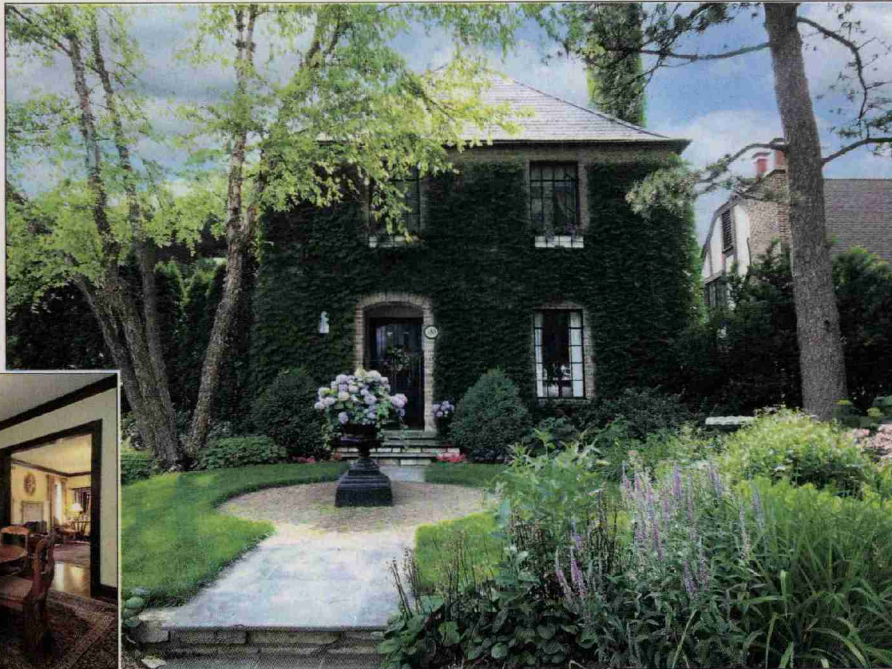
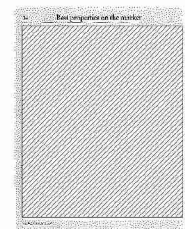


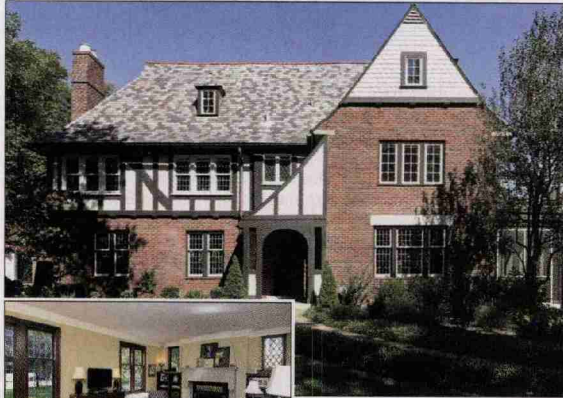
This week: Homes with easy commutes

1 ► **Hinsdale, Ill.** Built in 1924, this three-bedroom brick home is located in the heart of Hinsdale, six blocks from a Metra train to downtown Chicago. The house has a slate roof, and its rear yard has a perennial garden and a large brick patio. Interior features include marble and hardwood floors and a central vacuum. \$825,000. Robert Carlson, Weichert Realtors/Kingsland, (630) 917-9500

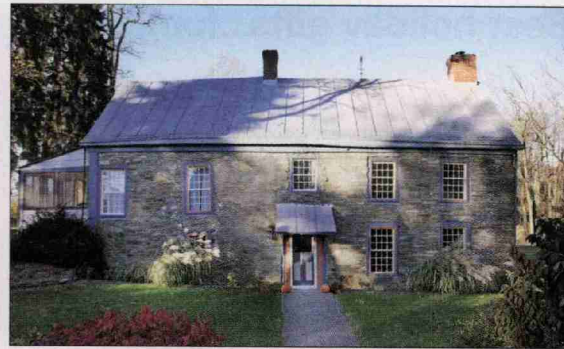
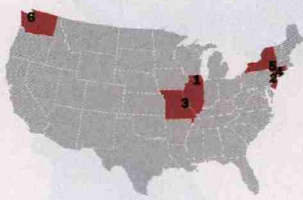


2 ▲ **Westfield, N.J.** This four-bedroom Arts and Crafts-style home is located three blocks from a New Jersey Transit train line to New York City. The house was built at the turn of the previous century and features a living room with a fireplace and a box-beamed ceiling, a second-floor office, and a family room with a vaulted ceiling. \$800,000. Frank Isoldi, [Coldwell Banker](#)/Westfield East, (908) 233-5555





3 ▲ University City, Mo. This four-bedroom Tudor was built in 1925 and has recently undergone a thorough renovation. The house is located four blocks from the MetroLink, for an easy commute to St. Louis. Interior features include arched doorways, custom cabinets, and a marble-tiled master bath. \$850,000. Joanne Iskiwitch, Coldwell Banker Gundaker-Ladue, (314) 414-9579



5 ▲ Rhinecliff, N.Y. Built in the 1700s, Kip House sits within walking distance of an Amtrak station on a 5.6-acre lot that affords Hudson River views and is bordered by 200 acres of farmland. The three-bedroom home has wide-board floors, exposed original beams, and a screened-in porch. A one-bedroom guesthouse is located behind the main house. \$695,000. Mary Beaton Stapleton, Halstead Property, (518) 828-0181



4 ▲ Rowayton, Conn. Set on a cul-de-sac, this 1955 three-bedroom house is within walking distance of a Metro-North commuter train to New York. The home has a two-story foyer, and the living areas feature a flowing floor plan and hardwood floors. The property has been professionally landscaped. \$1,379,000. Nancy Rawls Dauk, Halstead Property, (203) 858-1146

Steal of the week



6 ▲ Everett, Wash. This 1920s home is located four blocks from a commuter train to Seattle. The four-bedroom house features wood floors, two fireplaces, and a large kitchen with a breakfast nook. A detached two-car garage includes a second-floor apartment that can serve as a rental property. \$275,000. Adam E. Cobb, Windermere Real Estate/HKW, (206) 854-9454